

# HOW WILL POPULATION INCREASE AND AGEING AFFECT DEMAND FOR HEALTHCARE SERVICES IN THE YEARS TO 2030?



PROJECTED POPULATION INCREASE  
**640,000 - 1.1m**  
FROM 2015-2030

POPULATION AGED 65+



2015 1 IN 8



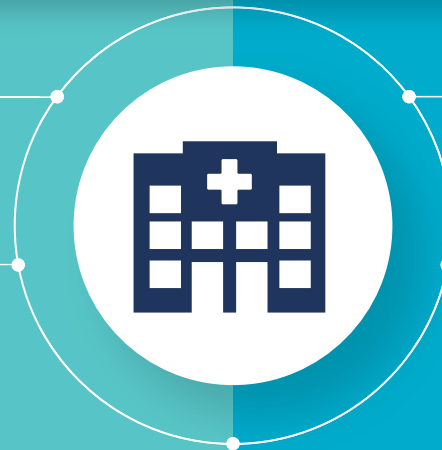
2030 1 IN 6

## PROJECTIONS FOR 2030 COMPARED TO 2015 LEVELS

### PUBLIC HOSPITALS

INPATIENT BED DAYS  
↑ 32-37%  
UP TO 1.20m EXTRA

DAY PATIENT CASES  
↑ 23-29%  
UP TO 0.30m EXTRA



### PRIVATE HOSPITALS

INPATIENT BED DAYS  
↑ 25-32%  
UP TO 0.20m EXTRA

DAY PATIENT CASES  
↑ 24-28%  
UP TO 0.13m EXTRA



GP VISITS  
↑ 20-27%  
UP TO 4.8m EXTRA



PRACTICE NURSE VISITS  
↑ 26-32%  
UP TO 1.9m EXTRA



PRESCRIPTION ITEMS (PUBLIC SCHEMES)  
↑ 34-37%  
UP TO 27.4m EXTRA



NURSING HOME RESIDENTS  
↑ 40-54%  
UP TO 15,600 EXTRA



HOME CARE PACKAGES  
↑ 44-66%  
UP TO 10,000 EXTRA



HOME HELP HOURS  
↑ 38-54%  
UP TO 7.7m EXTRA



PUBLIC PHYSIOTHERAPY VISITS  
↑ 24-30%  
UP TO 0.23m EXTRA



PUBLIC OCCUPATIONAL THERAPY VISITS  
↑ 33-38%  
UP TO 0.13m EXTRA